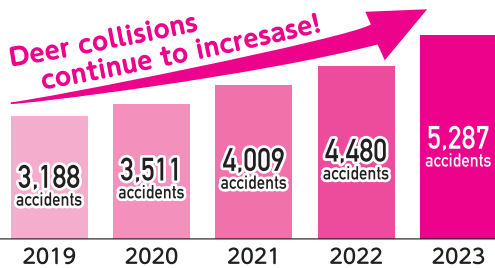


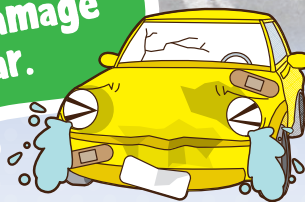
WARNING: Beware of deer collisions!

No. of deer-related traffic accidents in Hokkaido



Source: Hokkaido Prefectural Police Headquarters website

A deer collision may cause major damage to your car.



Shocking images are shown

Produced by the Foundation Hokkaido Traffic Safety Society



Deer collision video

**Deer may suddenly jump in front of you!
Slow down, watch ahead carefully!**

Important points to avoid a deer collision

Know deer behavior and drive safely!

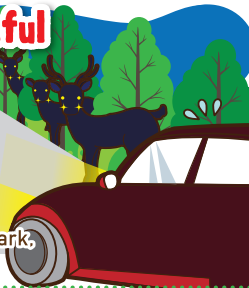
If you see one deer, expect and beware of a second one!

Deer tend to move in herds.



Be especially careful when driving in the evening!

Many accidents occur between 4 and 8 p.m. Light shining on deer illuminates their eyes. If you see glowing eyes in the dark, there may be deer near you!



Deer are clumsy on roads.

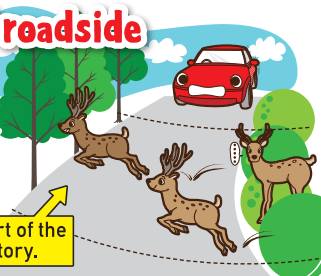
They tend to slip on asphalt and may fall down when hurrying. They may stop in their tracks in response to car lights and driving sounds.



Be careful of roadside forests!

Roads running through forests are part of their territory. Deer may jump out!

Roads are part of the deer territory.



The 5 municipalities with the most deer collisions in 2023

Municipality	Number of collisions
Tomakomai	387
Kushiro	281
Chitose	194
Sapporo	183
Shibecha	128

Source: Hokkaido Prefectural Police Headquarters website

Produced by the Hokkaido Regional Development Bureau, Ministry of Land, Infrastructure, Transport and Tourism



English Version



繁体字

Map of deer collisions on national highways in Hokkaido (FY 2024 version)

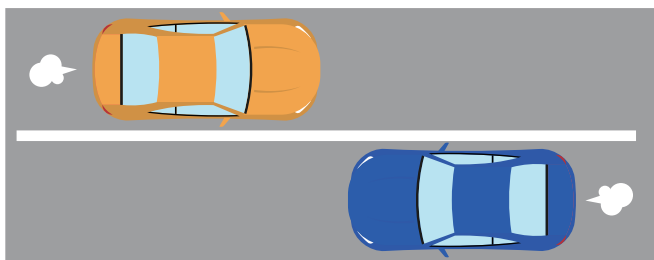
■ Hokkaido Branch, the General Insurance Association of Japan ■ Hokkaido Government ■ Hokkaido Police
■ Hokkaido Regional Development Bureau, Ministry of Land, Infrastructure, Transport and Tourism
■ Hokkaido Rent-a-Car Association ■ The Foundation Hokkaido Traffic Safety Society

Aioi Nissay Dowa Insurance Co., Ltd. AIG General Insurance Co., Ltd. Kyoei Fire and Marine Insurance Co., Ltd. SECOM General Insurance Co., Ltd. Sony Assurance Inc. Sompo Japan Insurance Inc. Tokio Marine & Nichido Fire Insurance Co., Ltd. Nisshin Fire & Marine Insurance Co., Ltd. Mitsui Sumitomo Insurance Co., Ltd. (As of September 2024)

Information to tourists-Know Japanese traffic rules to enjoy sightseeing in Hokkaido!

Japanese traffic rules

- 1.** Japan has a left-hand traffic system. Be careful not to drive on the right side.



- 2.** Stop at a red light unless there is a green arrow.



- 3.** Stop before the stop line at an intersection with a "stop" sign. Note: "Stop" does not mean "give way" in Japan.



To drive safely in Hokkaido

Drive slowly!

Hokkaido covers a vast area with long roads that connect cities.

Although these roads generally have wide traffic lanes and few traffic lights in the suburbs, do not exceed the maximum speed limits. Remember, by driving slowly you have the benefit of viewing Hokkaido's beautiful landscapes longer!



Beware of slipping in winter!

When driving on icy or snowy roads, the stopping distance can be about 10 times that on dry roads. Sudden actions often cause loss of control over a vehicle. Slow down and keep a safe distance!

