

# Take Extra Care on Slippery

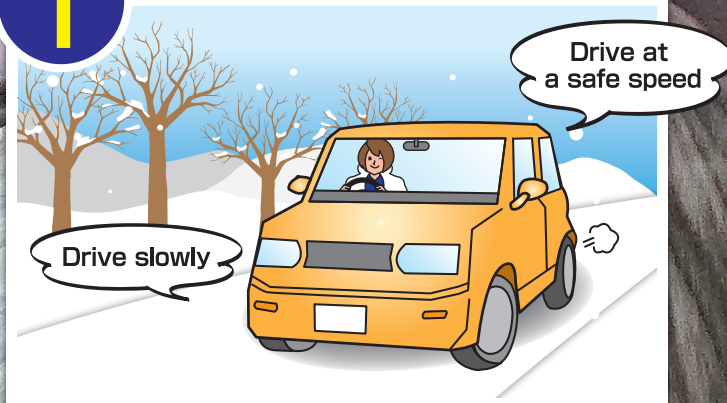
Pay particular attention on bridges,  
in tunnels, in shaded areas,  
and in mountainous areas  
which can be especially slippery!

## Winter Roads

### Four key points for safe winter driving

POINT  
1

Slow down and drive carefully!



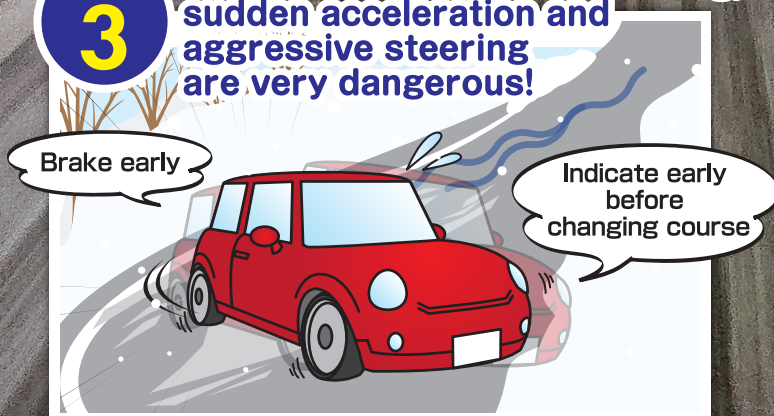
POINT  
2

Keep a safe distance  
between yourself and  
the car ahead-at  
least double the  
normal distance!



POINT  
3

Remember that sudden braking,  
sudden acceleration and  
aggressive steering  
are very dangerous!



POINT  
4

Be careful at/near  
intersections where ice and snow  
tend to melt!



The map of "Skidding Accidents Roads"  
is now available!

We made the map of places where traffic accidents  
frequently occur, which is caused by skidding on the  
icy roads, and the map is available on the web!

Click here  
to access!



Video produced by the foundation  
Hokkaido traffic safety society  
"Winter Roads are VERY Slippery"

冬季道路很容易打滑! 北海道交通安全協会

Click here  
to access!



English Version



中文版

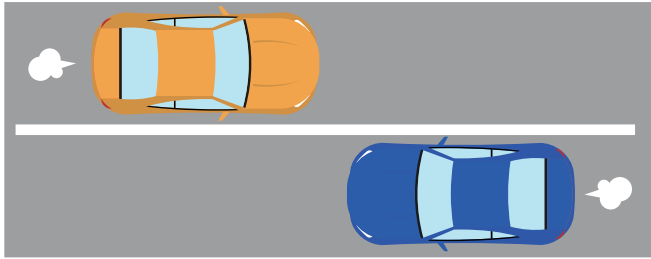
■The General Insurance Association of Japan ■Hokkaido Prefectural Police ■Hokkaido Government  
■The Union of Rent-Car Associations of Hokkaido Area ■The foundation Hokkaido traffic safety society

Aioi Nissay Dowa Insurance Co., Ltd. AIG General Insurance Company, Ltd. The Kyoei Fire & Marine Insurance Co., Ltd.  
SECOM General Insurance Co., Ltd. Sony Assurance Inc. Sompo Japan Insurance Inc. Tokio Marine & Nichido Fire Insurance Co., Ltd.  
Nisshin Fire & Marine Insurance Co., Ltd. Mitsui Sumitomo Insurance Co., Ltd. (As of September 2024)

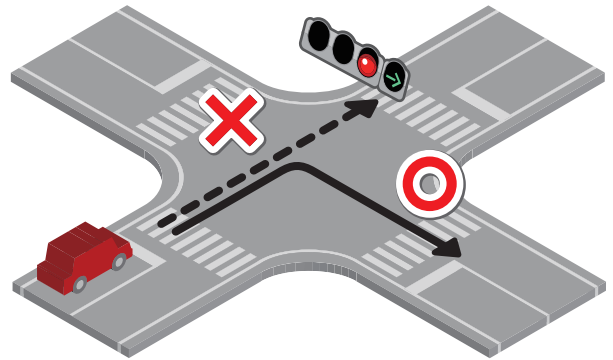
# Information to tourists-Know Japanese traffic rules to enjoy sightseeing in Hokkaido!

## Japanese traffic rules

- 1.** Japan has a left-hand traffic system. Be careful not to drive on the right side.



- 2.** Stop at a red light unless there is a green arrow.



- 3.** Stop before the stop line at an intersection with a "stop" sign. Note: "Stop" does not mean "give way" in Japan.



## To drive safely in Hokkaido

### Drive slowly!

Hokkaido covers a vast area with long roads that connect cities.

Although these roads generally have wide traffic lanes and few traffic lights in the suburbs, do not exceed the maximum speed limits. Remember, by driving slowly you have the benefit of viewing Hokkaido's beautiful landscapes longer!



### Beware of slipping in winter!

When driving on icy or snowy roads, the stopping distance can be about 10 times that on dry roads. Sudden actions often cause loss of control over a vehicle. Slow down and keep a safe distance!

